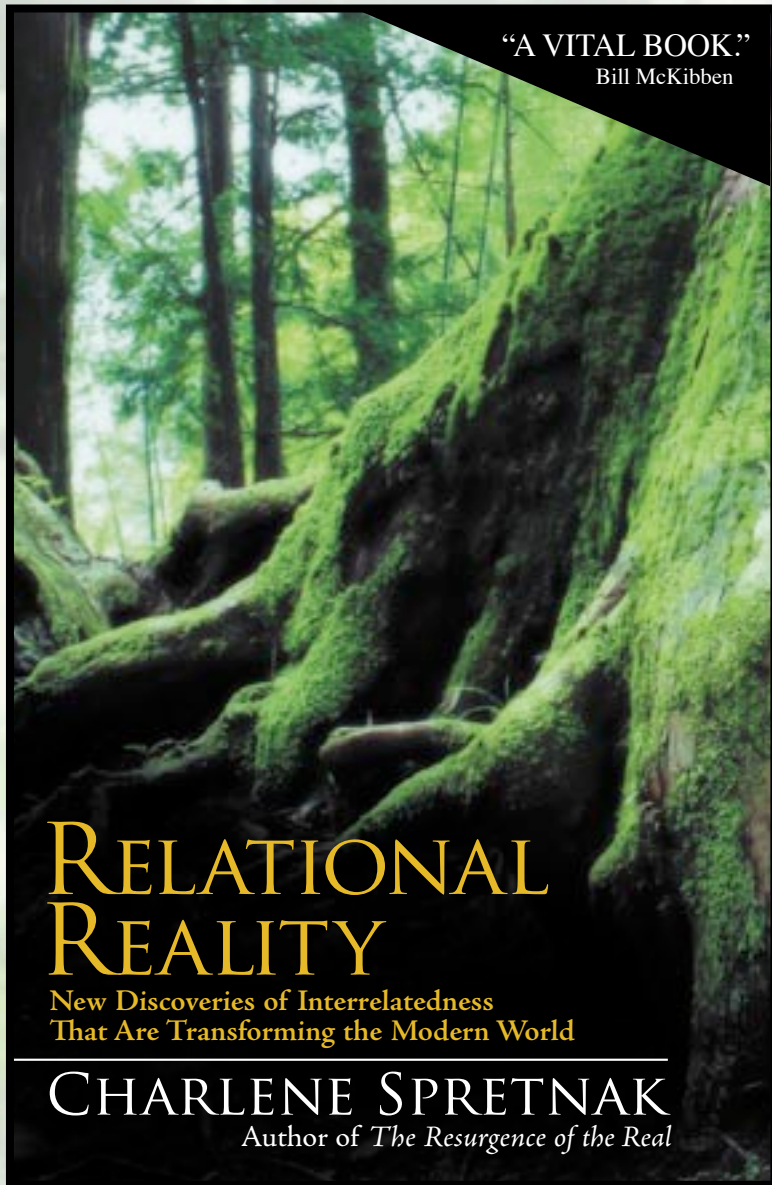


“Our hypermodern societies currently possess only a kindergarten-level understanding of the deeply relational nature of reality.”



With this opening sentence, *Relational Reality* begins the mapping of a new terrain that has been emerging gradually for the past several decades but in recent years has begun to transform every mainstream field of human endeavor. Focusing on four major fields as examples of the Relational Shift, Charlene Spretnak shows the coherence among numerous relational discoveries occurring simultaneously. All of our basic knowledge systems (built on the old idea that all things in the physical world are essentially separate and function mechanistically) are being profoundly corrected. No longer a marginal perspective, this fundamental realization is rippling through every area: all entities in this world, including humans, are thoroughly relational beings of great complexity who are both composed of and nested within contextual networks of creative, dynamic interrelationships. Nothing exists outside of those relationships. As we try to grasp the interrelated nature of reality, newly created relational approaches are already transforming the way we educate our children, attend to our health, green our communities, and rethink economic activity. New analyses of the crises of modernity and bountiful new solutions are the result.

Chapter 1 Relational Revelations

Discoveries and Emergence in the 21st Century
 Ecological = Organically Interrelated = Relational
 Our Checkered Past
 The Relational Imperative

Chapter 2 The Relational Shift in Education and Parenting

A Snapshot of the Current Crises
 The Growing Gaps in Education
 The Venal and Vapid Socialization of Our Youth via the Media
 School Life: In Class, Online, and Texting
 Peer-Oriented “Attachment Displacement” Disorder
 The Emerging Relational, Green Culture in Education
 Relational Factors in Learning
 An Ecoliterate, Relational K-12 Education
 A College Education in Relational Knowledge
 Life-long Learning and the Relational Shift

Chapter 3 The Relational Shift in Health and Healthcare

A Snapshot of the Current Crises
 The Emerging Relational Perspective in Physiology and Medicine
 Interpersonal Relationships and Human Health
 Dynamic Physiological Relationships within the Bodymind
 Interrelatedness Between the Bodymind and Its Environmental Context
 Preserving Our Deepest Relationship
 The Desires of the Bodymind

Chapter 4 The Relational Shift in Community Design and Architecture

The Emerging Relational Perspective in Our Built Environment
 Geometric Dominance and Organic Rebellions
 Community Revitalization
 Organic Architecture
 Relational Building for Bodies in Nature
 Eco-Effective Architecture
 A Visit to Relationton

Chapter 5 The Relational Shift in The Economy

A Snapshot of the Current Crises
 The Emerging Green, Relational Economic Culture
 Agriculture and Food Security
 New Ways of Doing Business
 Community-based Economics
 Transportation
 Energy
 Greenhouse Gas Emissions
 Other Toxins
 Waste
 Water
 International Trade
 “Development” in the “Third World”

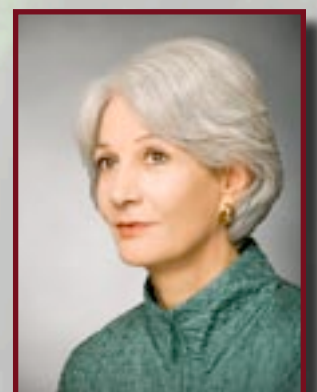
Chapter 6 Stepping Up

Reassessing the “Field-Dependence” of Women
 An Example of Applying the Relational Perspective:
 The Debate over the Origins of Religion
 The Relational Calling

**Paperback and e-book editions available
 in bookstores and at Amazon.com**

Green Horizon Books
Publication Date: May 2011
E-book Edition: June 2011

Charlene Spretnak is the author of several books on ecological and relational thought, cultural history, spirituality, feminism, and social commentary. These include *Green Politics*, *The Spiritual Dimension of Green Politics*, *States of Grace*, and *The Resurgence of the Real*.



Request PDF on ResearchGate | Relational Reality in Relativistic Quantum Mechanics | Up to now it has been impossible to find a realistic interpretation for the reduction process in relativistic quantum mechanics. The basic problem is the dependence of the states on the frame within which collapse takes place. A suitable use of the causal structure of the... We analyze the relational quantum evolution of generally covariant systems in terms of Rovelli's evolving constants of motion and the generalized Heisenberg picture. Relativity = Relational Reality. Albert Einstein's Relativity corresponds to Early Buddhism's Conditional Relation. Dhamma on Air #60 : There is no "Same Time". Lengths can Contract! Time can Dilate! Corresponding Video www.youtube.com/watch?v=KwrrtwkWENk. See also in the same Early Buddhism ~ Modern Science Trilogy Relational realities speak to the ways your action intimate meanings in other people. Nothing we ever do is neutral; neutrality is at most an unwatching, passively aware mind. Once a relation is developed, feeling is projected, because nothing is more genetically salient to our neurons (mirror neurons in particular) than the evaluation of a conspecific (definition: a member of one species).